

01594 822004

[admin@soudley.gloucs.sch.uk](mailto:admin@soudley.gloucs.sch.uk)



Friday 1st May 2026

# Soudley News

## **Dates for Diary**

May

5th - Height and weight school nurse screening for Reception & Year 6

5th - KS2 Archery at Viney Hill (group 2)

6th May—Hedgehogs Class Trip—Hopewell Colliery

14th—The Big School Workout—interactive session with Joe Wicks

20th—Sponsored Walk to Wenchford



## **Break time Snacks**

Children are encouraged to bring in a healthy snack; ideally fruit or vegetables.



## **Term Dates**

4th May—Bank holiday

21st May—We break up for half term

22nd May—Inset Day

1st June—Back to school

17th July—break up for summer!

20th July—inset day

## **Soudley Parent Survey March 2026 -**



## **Hedgehogs Class Trip to Hopewell Colliery**

- If you haven't already, please can you complete the consent form on Parentpay.
- If you would like to join us on the trip, can you please let the school office know asap. We would be very grateful of a few extra sets of hands :)
- Your child will need a packed lunch, coat and refillable drinks bottle.

SOUDLEY VILLAGE HALL  
PRESENTS

# AN EVENING OF MUSIC WITH LYDBROOK TRAINING BAND

FRIDAY 8<sup>TH</sup> MAY AT 7.30PM



**FREE ENTRY**

COME AND SUPPORT THE  
TRAINING BAND  
IN SOUDLEY VILLAGE HALL

DOORS & BAR OPEN FROM  
7PM

SOUDLEY BLUEBELLS

# AFTERNOON TEA



3<sup>RD</sup> & 4<sup>TH</sup> MAY SOUDLEY  
12 NOON - 4PM VILLAGE HALL

Gluten-free and Vegan options  
available

Come For The Bluebells, Stay For The Good Food and Company!

+ KIDS UP TO  
14 YRS!!

# Baby bank

Pop up

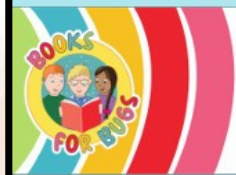
OPEN TO ALL  
Not means  
tested

MONDAY **11th** 10AM-12PM  
MAY

Ow Bist - Forest Community Space,  
Dockham Road, Cinderford GL14 2AN (next to Tesco)

Need a specific item/age range?  
Let us know!

Contact [katy@fvaf.org.uk](mailto:katy@fvaf.org.uk)  
If we have it, we will bring it!



**Books for Bugs  
14th Birthday  
Come join the fun!**

Over 100k books

All brand new

Wholesale prices

Open to everyone

**FREE BOOK  
for every child  
this Sunday**

From our extensive £1 range



**This Sunday 3rd May 10-4**

Cash and cards accepted  
Free parking right outside!  
No need to book and open to everyone

Books for Bugs, Building 12B Vantage Point,  
Mitcheldean, Gloucestershire, GL17 0DD

# SPRING FOOD FESTIVAL

Sunday 24<sup>th</sup> May 2026

The Speech House Hotel Grounds  
Forest of Dean Gloucestershire  
GL16 7EL



Making Dips, chopping veggie sticks & making either nettle veggie burgers or vietnamese spring rolls

## KIDS COOKERY SESSIONS

Learn some simple cookery skills which can be replicated at home. You will be taught how to make the dishes by Harts Barn Cookery School & take home your food at the end of the workshop.

More info..

[www.forestshowcase.org](http://www.forestshowcase.org)



HARTS BARN COOKERY SCHOOL

# SPRING FOOD FESTIVAL

Sunday 24<sup>th</sup> May 2026

The Speech House Hotel Grounds  
Forest of Dean Gloucestershire  
GL16 7EL



10am - 5pm

Early Bird Tickets  
Adult £8  
child £4 / US's free  
Family ticket £24  
Tickets available online or on the door

Amazing Local Food Producers

Live Music - Street Food - Arts & Crafts  
Cookery Theatre - Kids Cookery Classes  
Talks & Tastings - Punch & Judy - Dog  
Agility - Circus Skills .....& much more

[www.forestshowcase.org](http://www.forestshowcase.org)



HARTS BARN COOKERY SCHOOL  
leaf CREATIVE  
SACRES  
FOREST DELI  
HALE & CO. (Oxfordshire) LTD



**TICKETS AVAILABLE NOW!**

**AMAZING LEGO DISPLAYS**

**NEW & RETIRED LEGO SETS**

**BUILD CHALLENGES**

**ACTIVITIES FOR ALL AGES**

**CHARITY TOMBOLA**

**MILLIONS OF LOOSE BRICKS**

**PLUS SO MUCH MORE!!**

**10<sup>TH</sup> MAY**

GL1 LEISURE CENTRE

**GLOUCESTER BRICK FESTIVAL**

**MORE LEGO<sup>®</sup> THAN YOU CAN DREAM OF**

**TICKETS ON SALE NOW!**





**10<sup>TH</sup> MAY**

GL1 LEISURE CENTRE

**GLOUCESTER BRICK FESTIVAL**

**MORE LEGO<sup>®</sup> THAN YOU CAN DREAM OF**