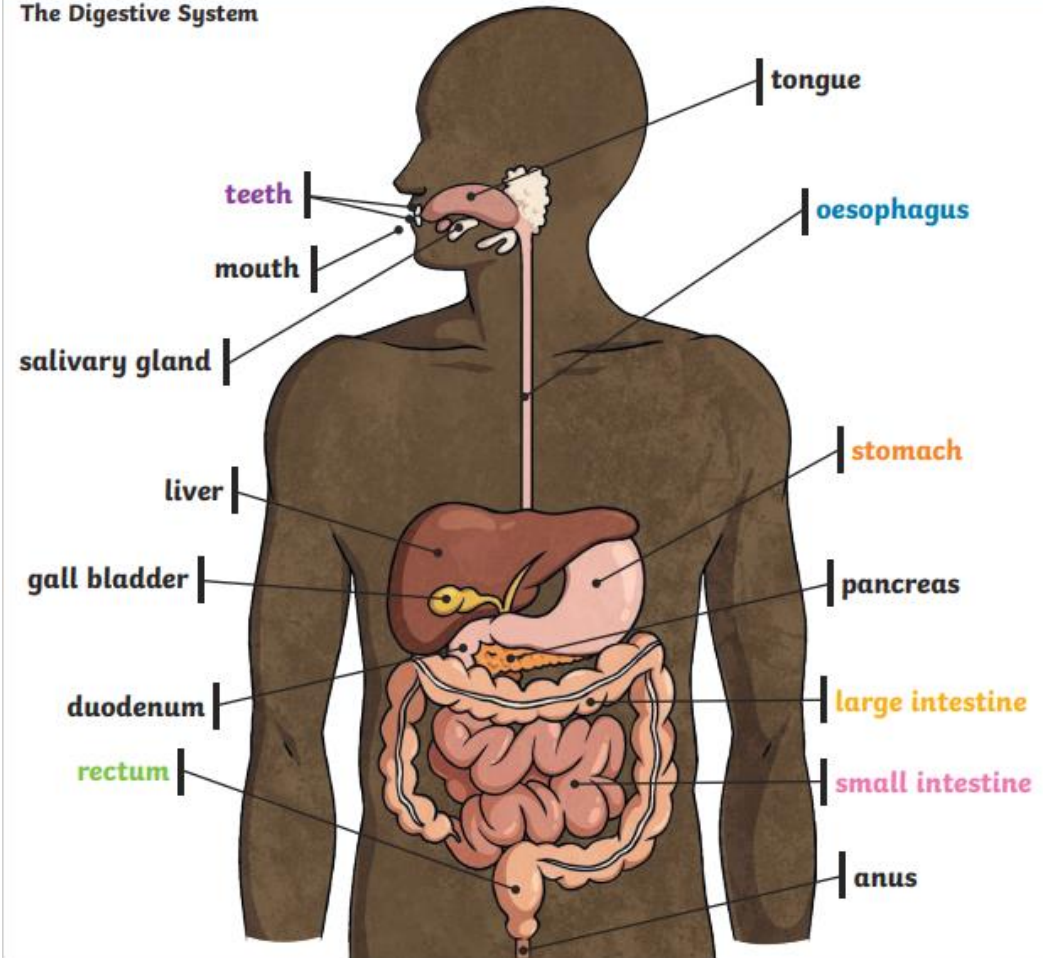


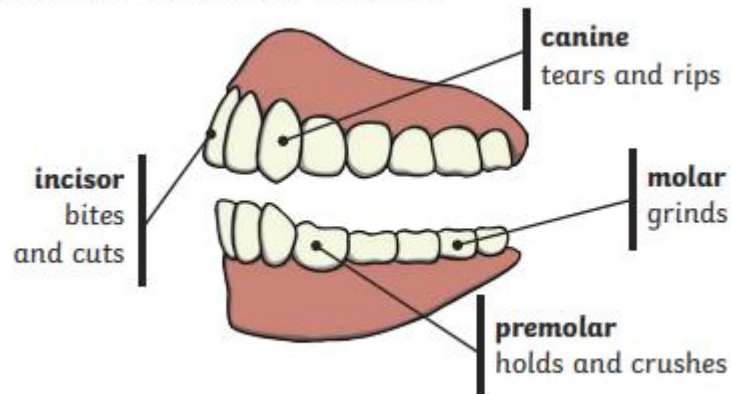
Vocabulary

digest	Break down food so it can be used by the body.
oesophagus	A muscular tube which moves food from the mouth to the stomach.
stomach	An organ in the digestive system where food is broken down with stomach acid and by being churned around
small intestine	Part of the intestine where nutrients are absorbed into the body.
large intestine	Part of the intestine where water is absorbed from remaining waste food. Faeces are formed in the large intestine.
rectum	Part of the digestive system where faeces are stored before leaving the body through the anus.
teeth	Hard structures in the mouth that help with biting and chewing food.
herbivore	An animal that eats plants
carnivore	An animal that feeds on other animals.
omnivore	An animal that eats plants and animals.
producer	An organism, such as a plant, that produces its own food
predator	An animal that hunts and eats other animals.

The Digestive System



Human Teeth and Their Functions



Some people have wisdom teeth but they have no function now.

