



Soudley News

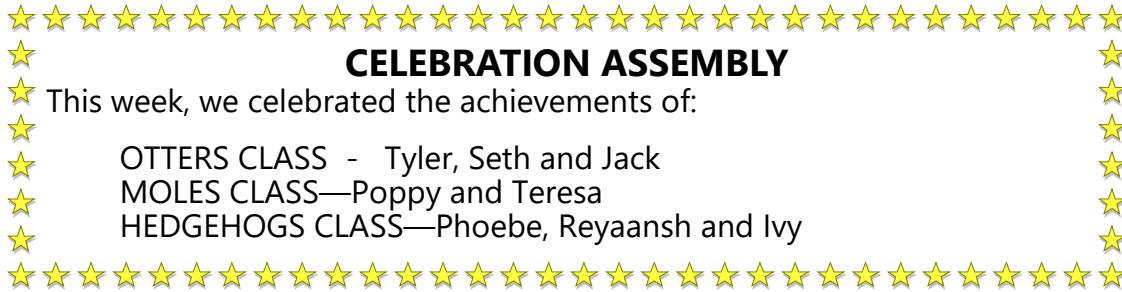
15.9.2023

www.soudleyschool.com

01594 822004

admin@soudley.gloucs.sch.uk

This term's school value is Friendship



CELEBRATION ASSEMBLY

This week, we celebrated the achievements of:

- OTTERS CLASS - Tyler, Seth and Jack
- MOLES CLASS—Poppy and Teresa
- HEDGEHOGS CLASS—Phoebe, Reyaansh and Ivy

Moles Class



We had a really lovely visit this week from the Midlands Air Ambulance. The children learnt all about how the air ambulance works and why they are so important. We had an excellent session learning how to give CPR, and the children practiced on some 'Annie' dolls. We also learnt about defibrillators, and how to put someone in the recovery position, which the class practiced on each other.

We have also been learning about adjectives, nouns, verbs and adverbs, and using them to make our sentences more exciting. We have used a senses splat to thinking about what we would see, hear and smell as we walked through a forest, and used these to help us to describe being in a forest setting.

I wish everyone a lovely weekend,

Mr Martin

BLACK HISTORY MONTH

On Monday 9 October Soudley School we will be marking Black History Month with a visit from the Konflux Theatre Group. Our History Train topic is 'Black History'.

Konflux Theatre Group will work with our KS2 children throughout the day, using a series of dramatic techniques to create a 15-20 minute 'Play in a Day' performance to share at the end of the school day.

All parents and carers are invited to join us at 2.45 pm on that date to watch the children's performance. We hope that you will join us.

Term Dates

Term 1
4 Sept to
27 Oct

Term 2
6 Nov to
22 Dec

Term 3
8 Jan to 9 Feb

Term 4
19 Feb to
22 March

Term 5
8 April to
24 May

Term 6
3 June to
22 July

INSET days:
4 September
6 November
22 December
24 May
22 July

Other dates:
Bank Holiday
- 6 May



Otters Class



It has been a busy first full week back in Otters class and all of the children have got 'stuck in' to their learning. The children have been very hands on.



On Wednesday, the school were visited by the air ambulance service. They learnt CPR, how to stem bleeding, using bandages and many more first aid skills.

In science the children learnt about plant reproduction. Spider plants do this by sending out branches with baby spiderlings on. They worked together in pairs, to creating cuttings and plant their spiderling.



Otters Class also enjoyed their first session in forest school, building dens. Forest School will be every Friday. Can you ensure that your children bring in sensible footwear and long trousers for these sessions.

Miss Barton and Mrs Smith



Hedgehogs Class



We have had a lovely start to the term and it is great to see how settled in everyone is. Thank you so much to staff for all their hard work preparing classrooms and the curriculum ready for children to come back. The school looks amazing!

Hedgehogs class has been transformed into an open plan room with various learning zones:



Hedgehogs children have been busy with their number work, Talk through Stories, music and started Forest Schools sessions today with a Bug Hunt. Mrs Baldwin has enjoyed getting to know the children and they have impressed her with their good manners and their smiles!



[TERMLY OVERVIEWS and KNOWLEDGE ORGANISERS | Soudley School](https://www.soudleyschool.com)

Termly Overviews for Soudley School, Soudley Primary School, Forest of Dean, Gloucestershire
[soudleyschool.com](https://www.soudleyschool.com)

The termly overviews and knowledge organisers can be seen on the website and if you have any questions please contact the school:

[TERMLY OVERVIEWS and KNOWLEDGE ORGANISERS | Soudley School](https://www.soudleyschool.com)

Look out for:

- We have arranged yoga sessions for Hedgehogs and Moles classes, starting on Fri 29th September
- Staff across Soudley, Steam Mills and Woodside are planning joint activities for different year groups this year, so that the children can visit each other's schools and enjoy enrichment trips, based on the curriculum. Look out for more information as these events are organised.

We look forward to sharing the Now, Press, Play resource with Steam Mills and Woodside, to enrich children's learning further:



now>press>play is an award-winning immersive audio resource for primary schools that engages children in the curriculum through sound, story and movement with 90+ Experiences.

In our Experiences each child is given a pair of wireless headphones. Immersed in sound, they become the main character in a story, meeting people, discovering places and solving problems on an educational adventure they'll never forget.

From climbing through rainforest canopy in the Amazon, to fighting a woolly mammoth in the Stone Age, our audio adventures increase engagement, extend life experiences and inspire children to produce quality writing.

now>press>play is an inclusive resource which can be used as a whole class activity or with smaller groups for intervention work.

As Soudley's curriculum is based on that at Woodside Primary, you may be interested in their recent Ofsted report as the curriculum was seen as a strength:

[10297919-Woodside-Primary-School-115519-Final-PDF.pdf](#)

Kind regards,
Mrs Mel Davis
Executive Headteacher

The following has been copied from the www.gov.uk website.....

Back to school advice issued amid high levels of flu, COVID-19 and scarlet fever

Following simple steps can help protect children, minimise the spread of illness in education and childcare settings and protect wider communities.

Flu and coronavirus (COVID-19) are [currently circulating at high levels](#) and are likely to continue to increase in coming weeks. High numbers of scarlet fever, which is caused by group A streptococcus, also [continue to be reported](#).

Professor Susan Hopkins, Chief Medical Adviser at the UK Health Security Agency (UKHSA), said:

It's important to minimise the spread of infection in schools and other education and childcare settings as much as possible. If your child is unwell and has a fever, they should stay home from school or nursery until they feel better and the fever has resolved.

Helping children to learn about the importance of good hand hygiene is also key, so practice regular handwashing at home with soap and warm water. Catching coughs and sneezes in tissues then binning them is another simple way to help stop illness from spreading.

Adults should also try to stay home when unwell and if you do have to go out, wear a face covering. When unwell don't visit healthcare settings or visit vulnerable people unless urgent.

Remember that flu vaccination is still available for all eligible groups and is the best protection against the virus. We have seen good uptake in older age groups but vaccination among young children remains low. Flu can be very unpleasant and in some cases can lead to more serious illness. Getting your child vaccinated protects them and others they come into contact with, and it's still not too late.

Eligible children include:

- those aged 2 and 3 on 31 August 2022
- all primary school-aged children
- some secondary school-aged children

You can get more information [getting your child vaccinated against flu](#) on NHS.UK.

Things Happening at Soudley School Week Commencing 18 September 2023

8am – 8.30am DAILY - BREAKFAST CLUB
- £2.50 per child per day

Mon

Tues Year 5 and Year 6 pupils swimming - please remember your swimming kit every Tuesday!

3.15-4.15 pm Young Voices Choir Club (Years 3-6)

Weds

Thurs 3.15-4.15 pm Basketball after school club — for pupils in KS2 (Year 3 to Year 6)

3.15-4.15 pm Multi Sports after school club—for pupils in KS1 (Year 1 and Year 2)

Fri **Forest Schools—Hedgehogs and Moles (am) Otters (pm)**
Pupils should wear long trousers, trainers or wellies, and please bring a raincoat in case it's wet.

BREAKFAST CLUB

Breakfast Club will continue to be £2.50 per day and is payable DAILY.

As we continue to be a cashless school, if your child/ren attend Breakfast Club, please go into your child's ParentPay account to pay the £2.50 on the day that they attend. Thank you.

Breakfast Club runs from 8 am until the start of school every school day during term time. For a very reasonable charge of £2.50 per child per day, the children enjoy a breakfast of toast and cereals, and sometimes pancakes and bagels too. They all love the fun and relaxing start to their school day, doing art, reading and playing with their friends.

In order for this provision to continue it must be viable. Please let the school office know if you would like to book your child/ren into Breakfast Club.

CHARGE FOR DAMAGED BOOKS

That due to an increasing number of books being returned to school in an unsatisfactory condition, there will be a charge incurred for any books that are returned to school damaged.

It's time for Coffee Morning and you're invited



I'm hosting my Coffee Morning to raise money for Macmillan.
There's a cuppa with your name on it.

When: Friday 29 September 2023

Where: Soudley School Hall

RSVP: not necessary

From: 9 am until 10 am

More info: Mrs Penn - School Office



Macmillan Cancer Support, registered charity in England and Wales (261017),
Scotland (SC039907) and the Isle of Man (604). Also operating in Northern Ireland.
MAC19622_INVITE

MACMILLAN
CANCER SUPPORT

DIARY DATES 2023-2024

September 2023

- 22 Young Minds Matter—whole school assembly—looking after our mental health
- 29 Macmillan Cancer Coffee Morning

October 2023

- 9 Konflux Theatre visit — KS2 History Train to mark Black History Month
- 16 Nasal flu immunisations—Reception to Year 6
- 23 School Photographs

November 2023

- 6 **INSET day**
- 18 Children In Need

December 2023

- 6 Chaplins Pantomime visit
- 13 Christmas Lunch
- 22 **INSET day**

February 2024

- 28 Life Education Visit

March 2024

- 15 Comic Relief 2024

May 2024

- 24 **INSET day**

June 2024

- 3 Leavers' and Class photographs
- 10-14 Bikeability Training for Year 6 pupils

July 2024

- 22 **INSET day**

SPOOKTACULAR OCTOBER HALF



TERM ACTIVE CAMP



FOREST VIEW PRIMARY SCHOOL

MONDAY 30TH OCTOBER UNTIL FRIDAY 3RD NOVEMBER!

**BEST HALLOWEEN COSTUME
COMPETITION ON TUESDAY 31ST!**

**HALLOWEEN THEMED COLOUR
RUN ON FRIDAY 3RD!**

HALLOWEEN THEMED GAMES TOO!

NORMAL HOURS - 9.30AM UNTIL 4.30PM

EXTENDED HOURS - 8.30AM UNTIL 5.30PM

**CHILDCARE
VOUCHERS
ACCEPTED** ✓



**FROM £20
PER DAY!**

**20+ SPOOKY
SPORTS ON OFFER!**

BOOK HERE ➔

**PROGRESSIVE-SPORTS-NORTH-
GLOS.CLASSFORKIDS.IO/CAMP/44**

OR CALL US ON 01889 343120

IF YOU HAVE ANY QUESTIONS PLEASE EMAIL JAMIE ON:

J.KNIGHT@PROGRESSIVE-SPORTS.CO.UK

YOUNG CREATIVES

at **ARTSPACE CINDERFORD**



DISCOVER! AGES 6 - 11

Starts Tuesday 19th September 2023 / 6 weeks

4:30pm- 5:30pm

Cost: £24 (£16 concessions) for 6 week course

'Discover!' will introduce you to a range of arty projects and you'll get to try your hand at using lots of different materials and techniques throughout the term



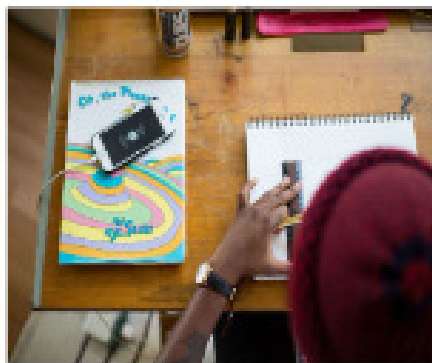
EXPLORE AGES 11 - 14

Starts Tuesday 19th September 2023 / 6 weeks

6:00pm- 7:30pm

Cost: £32 (£22 concessions) for 6 week course

This group will help you to build your art portfolio and will encourage you to develop work in a range of media, using a variety of art, design and craft techniques.



ADVANCE AGES 12+

Starts Thursday 21st September 2023 / 6 weeks

5:30pm- 7:30pm

Cost: £38 (£26 concessions) for 6 week course

This group is designed as a follow on group from 'Discover!' and/or 'Explore' and will help you to further shape your ideas and develop your art skills in your chosen art form/medium.

At Artspace, The New Mercury, 3 Woodside Street, Cinderford, GL14 2NL

To book a place for you child/children, or for more information
call **01594 825111** or email **dan@artspacecinderford.org**
or visit our website **www.artspacecinderford.org**

ARTSPACE
CINDERFORD

HEY, FAMILIES OF CINDERFORD

JOIN OUR FREE HEALTHY LIFESTYLE COURSES TO MAKE HEALTHY HABITS TOGETHER, AND HAVE FUN DOING IT!

Miners Welfare Hall
Wesley Road, Cinderford,
GL14 2JN

Wednesday 16:30 - 18:30
For 12 weeks from 20th September 2023

To be eligible for your place on this awesome free service, your family must live in Gloucestershire and include one child aged 7 - 12 who is above their ideal healthy weight.



Healthy eating



Fun activities



Making healthy habits at home!

To sign up for your family's **FREE** place...



beezebodies.com/families



01452 717262

or scan me with
your smartphone
camera



BeeZee Bodies are offering free 12-week Healthy Lifestyle programmes to families in the Forest of Dean who are above the ideal weight (only 1 child needs to be over this weight). This will take place at The Miner's Welfare Hall, Wesley Road, Cinderford.

The programme offers a learning topic each week, such as portion size, habits and routines for the first half of the evening. The 2nd part is led by an activity coach, which gets the whole family moving more.

The programme is designed to lead to a healthier lifestyle using behavioural science techniques.

We also have the same programme but online for those families unable to attend a face-to-face programme.

Referrals can be made through the website either by the family or by a professional. It is quick and easy to do...follow this link

<https://beezeebodies.com/refer-a-client/>

The programme commences 20th September 2023

If you would like further information, please get in touch.

Helping You Make Healthy Habits As A Family

Come along to our fun & free **online** healthy lifestyle courses!



Healthy Eating Tips



Making Healthy Habits at Home



Fun Online Activities for the Whole Family



BeeZee Live

Monday	5-8s 5:30pm	9-12s 6:30pm
Tuesday	5-8s 4:30pm	9-12s 5:00pm & 6:30pm

12 week BeeZee Families courses starting 25th September!

Sign up for your family's **FREE** place at

beezeebodies.com/families



www.beezeebodies.com/families

03308 186308



Apply online for

FREE

SCHOOL

MEALS



Check to see if your child is eligible using the confidential online portal available on our website www.gloucestershire.gov.uk/freeschoolmeals

Your child's school receives extra funding for each eligible child registered.

If you do not have internet access speak to your child's school.



You could save up to **£437** per year



You may also be able to get extra support for free milk, reduced contributions for school trips and uniform grants – check with your school.

THE DANGER ZONE!

Parking on zig-zag lines is dangerous and can incur a fine if you are caught!

Zig-zag lines are there for a reason; to allow good visibility for drivers to see pedestrians in high risk zones (ie on pedestrian crossings and outside of schools).

Please do not put the lives of our children at risk by parking on the zig-zag lines outside of the school, even for the shortest time.

Thank you for your cooperation.

Appointments during school hours

Please avoid arranging medical/dental appointments during the school day.

We do know this cannot always be helped, however, appointments at the end of the school day (from 2 pm onwards) are far less disruptive to your child's education than morning appointments please.

Pupils should be collected from school with just enough time to allow to get to the appointment on time and, if the school day has not ended, they should be returned to school immediately afterwards please.

You should also provide the school with a copy of your child's appointment letter for the attendance register.

Thank you for your continued support.

Weekly Reminders:

- Please ensure that Lunches are ordered on ParentPay by 8.30 am on the day they are required
- For the Health and Safety of the children, parents must not bring their children through the staff car park when dropping off or picking up from school.

Children may only be brought through the staff car park when the pedestrian gates to the playground are locked during the school day, and then **children must be escorted through the car park to keep them safe.**

- Please remember to inform the school office by 9.30 am each day, if your child is going to be absent from school.

Thank you



Soudley School
 Church Road
 Soudley
 Cinderford
 Gloucestershire
 GL14 2UA

Tel: 01594 822004

Email: admin@soudley.gloucs.sch.uk

Website: soudleyschool.com

What to do if you have a query or would like support:

Query about a school club or event date/time.	Check the newsletter, which is distributed via email and is on the school's website
Query about ParentPay, Breakfast and After School Club or to notify school about changes to picking up arrangements, absences and medication	Contact Mrs Penn at the school office
Query about FOSS events	Please contact FOSS: Email: FOSS@soudley.gloucs.sch.uk FOSS Facebook page, or speak with a member of FOSS in the playground)
Quick query about homework or class work	Check with your class teacher at pick up time
Query about homework, class work or request for meeting about a class based query	Contact the school office for an appointment with your child's class teacher
Pastoral support for your child and/or family	Talk to your child's class teacher first and if appropriate a meeting can be arranged with our family support worker, Mrs Penn
Special Educational Needs (SEN) support	Talk to your child's class teacher first and if appropriate a meeting can be arranged with our SENDCo, Mrs Jeavons
If your query is ongoing	Contact the school office for an appointment with our senior teacher, Mrs Toomer
If your query is still ongoing	Contact the school office for an appointment with our Executive Deputy Head, Mrs Fawkes
If your query remains unresolved, then	Contact the school office for an appointment with our Executive Head, Mrs Davis

What can you do to help?

Take an interest in your child's education.

- Ask them about their day and praise and encourage their achievements at school.
- If your child is missing school or is seemingly unhappy, you should discuss your concerns with your child.
- Make sure your child understands that you do not approve of them missing school, but be on the alert for any particular reasons for non-attendance, such as bullying or problems with school work.

Contact the school as soon as possible when a concern is identified so that you can work with them to resolve any difficulties.

Be willing to engage with any support offered by the school or Gloucestershire County Council Support Services.

Make sure your child arrives at school on time for both the morning and afternoon sessions.

If your child is ill or absent for any other reason, contact the school on the first day of absence.

Follow the school's procedures for notifying absence, and always let the school know of any days that your child is unable to attend.

Updated November 2020

It all adds up!



Can they afford to keep missing out?

Every Minute Counts!

Being late for school reduces learning time.

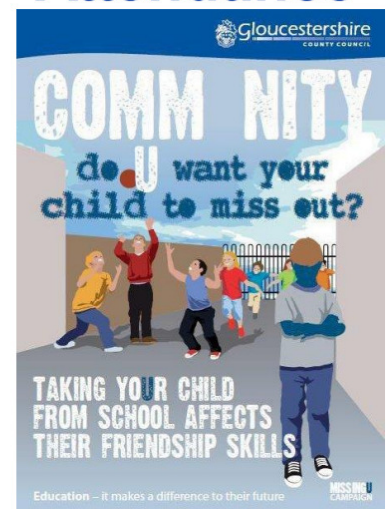
5 minutes late every day = 3 days of learning missed per year.

15 minutes late every day = 9 days of learning missed per year.

Arriving late can be very disruptive for your child, the teacher, and the other children in the class.



School Attendance



Information for Parents and Carers



Why is it important for children not to miss school?

Children only get one chance at school, and your child's chances of a successful future may be affected by not attending regularly. If children do not attend school regularly they may:

- Struggle to keep up with school work. In a busy school day it is difficult for schools to find the extra time to help a child catch up.
- Miss out on the social side of school life. Poor attendance can affect children's ability to make and keep friendships; a vital part of growing up. Employers want to recruit people who are reliable. Setting good attendance patterns from an early age will also help your child later on in life.

What might the impact of poor attendance be on your child?

Research shows children who are not regularly attending school are:

- More likely to become involved in, or be a victim of crime and anti-social behavior.
- More likely to fall behind due to the strong link between attendance and achieving good results.
- Less likely to achieve 5 good GCSEs (grades 9-5) compared with those with less than 8 days absence.
- More likely to have increased levels of anxiety due to inconsistencies and uncertainty in their routine.
- More likely to have reduced self esteem due to finding learning increasingly hard having missed out on key information.



What does the law say?

By law, all children of compulsory school age (between 5 and 16) must get a suitable, full-time education. As a parent, you are responsible for making sure this happens, either by registering your child at a school or by making other arrangements which provide a suitable full-time education.

Once your child is registered at a school you are responsible for making sure he or she attends regularly.

What happens if your child does not attend school regularly?

If your child fails to attend regularly - even if they miss school without you knowing - the Local Authority (LA) may take legal action against you.

Schools will notify you if your child's attendance level is a concern and look to work with you to put in place steps to improve it. If attendance continues to require improvement then schools will look to initiate an Attendance Improvement Meeting (AIM).

The AIM is the start of the legal process. It is important you engage with the process and work with the support provided to meet the agreed targets. These targets will be reviewed and progress evaluated at a review meeting. If satisfactory progress is made then targets will either be considered met or adjusted until attendance is satisfactory. If progress is not made then you may be referred to the LA for legal intervention.

You run the risk of being issued with a Penalty Notice or being prosecuted in court. If this happens:

- Parents can be fined up to £2,500 or imprisoned for failing to ensure that their child attends school regularly.
- Magistrates can also impose a Parenting Order, which means that the parent has to attend a counselling and guidance programme, usually a parenting class.

When is absence authorised?

There may be times when your child has to miss school because they are unwell. If your child becomes ill you should notify the school immediately and follow the school's absence procedures.

Children may have to attend a medical or dental appointment in school time. However, you should, whenever possible, try to make routine appointments such as dental check-ups during the school holidays or after school hours. Schools have the right to request medical evidence to validate absences for medical reasons.

If you think you might need to take your child out of school, discuss the reasons with the school as soon as possible. Absence must be requested as far in advance as possible. Absences will only be authorised by the school in exceptional circumstances.

Examples of absence that may be considered as exceptional circumstances include family bereavement or taking part in an agreed religious observance. The decision on whether to authorise absence is made at the headteacher's discretion.

For more information

For more information you can contact the Local Authority's Education Inclusion Service at:

Phone: 01452 427274

Email: Attendance@gloucestershire.gov.uk

Website: www.gloucestershire.gov.uk/education-and-learning





Although term time leave request forms are available from the office, this does not mean that holidays are authorized or the request will be granted. Please read the below regarding penalties:



Request for a leave of absence during term time

Parents should be aware that the law does not grant parents an automatic right to take their child out of school during term time. The Department for Education allows a Headteacher the discretion to consider authorising a leave of absence in term time only in "exceptional circumstances".

You may consider that a holiday will be educational but your child will still miss out on the teaching and learning that their peers will receive whilst your child is away. Children returning from a leave of absence during term time are also unprepared for the lessons which build on the teaching they have missed and arrangements need to be made for individual children to catch up on missed work. Disruption to the continuity of teaching and learning is something we all have a responsibility to avoid.

If requesting a leave of absence you will need to complete the form on the reverse of this notice, setting out the reasons. If the holiday is not considered to be an exceptional circumstance it will not be agreed. If you nevertheless take your child out of school for the leave of absence this **will be recorded as unauthorised leave**.

In the case of an unauthorised leave of absence the headteacher may request that the Local Authority issue a Fixed Penalty Notice without further warning to the parent.

Please note that such a penalty is issued to each parent for each child taken out of school.

A Penalty Notice is a fine of £60 if paid within the first 21 days which increases to £120 if paid between 21 and 28 days.

Thereafter, if the penalty remains unpaid this may lead to prosecution through the Magistrates' Court.